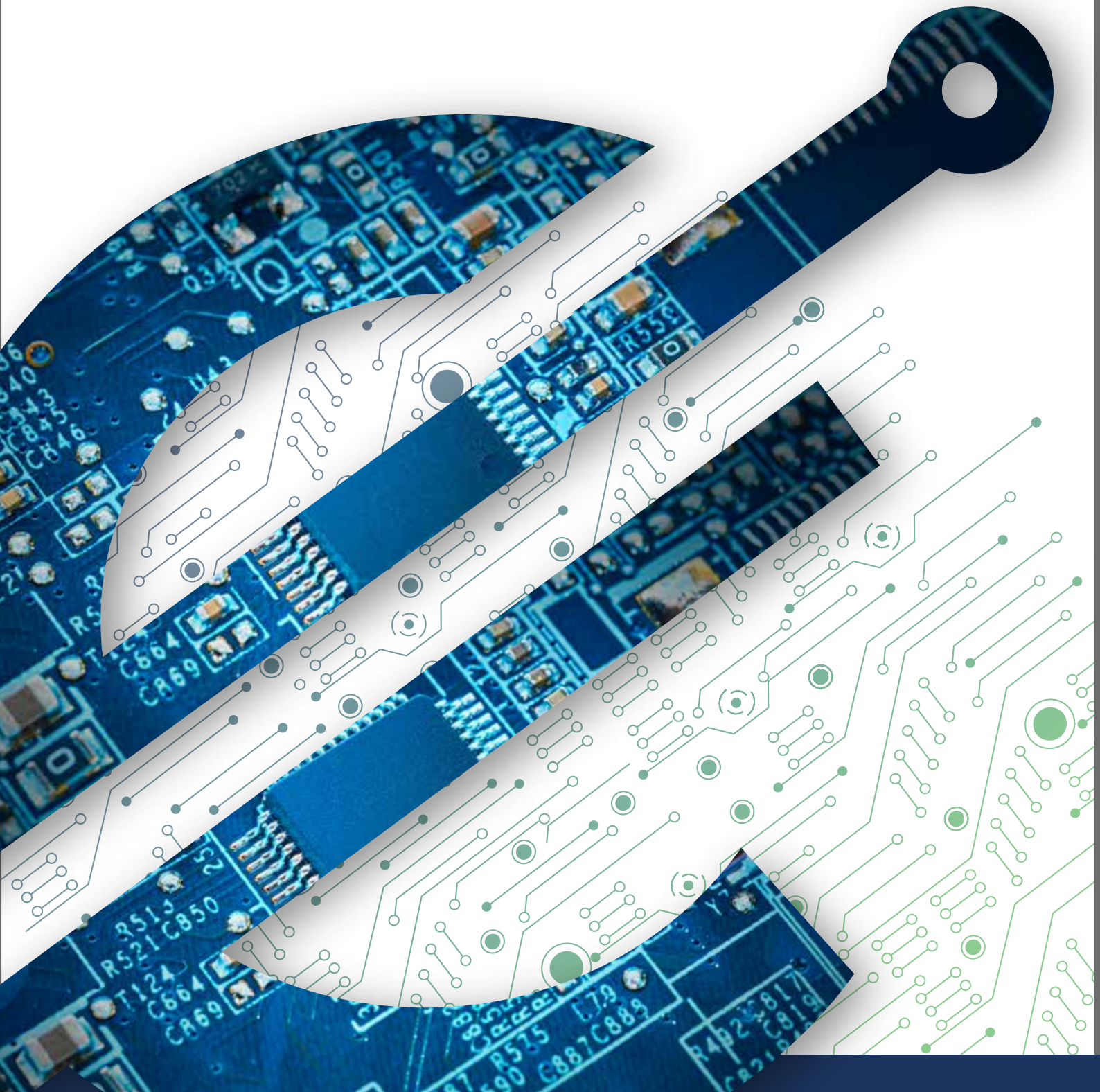




We Are
Committed
To Your
Successes

www.nisteceltek.com



About

Eltek Global Sourcing has formed strategic partnerships with PCB suppliers around the world to provide an off-shore extension to our domestic manufacturing operations. Our ongoing goal is to assist our customers achieve the best possible time to market and competitive advantage by producing printed circuit boards in a sustainable way at the lowest total cost through our competence, delivery accuracy and product quality.

Eltek Global Sourcing with domestic engineering support; manufacturing infrastructure and domestic quality inspection, bringing you time to market savings. Working hand-in-hand with our domestic facilities, we can take you from prototype to mass volume production including inventory management; risk mitigation, all under the full support and backing of Eltek Ltd support.

Eltek Global Sourcing offer:

- High Density Rigid PCBs
- Flex & Rigid-Flex PCBs
- RF/Microwave PCBs

STANDARD TECHNOLOGIES	Factory 1	Factory 2	Factory 3
Through-Hole Capabilities			
Rigid Layer Count	Yes	Yes	Yes
Standard 2 - 4 Layers	Yes	Yes	Yes
Standard 6 - 10 Layers	Yes	Yes	Yes
Advanced 10 - 20 Layers	Yes	Yes	Yes
Advanced 20 - 30+ Layers	Yes	Yes	Yes
Advanced Capabilities			
Flex	Yes	No	No
Rigid Flex	Yes	Yes	No
Cavity Boards	Yes	Yes	Yes
Sequential Lamination	Yes	Yes	Yes
Blind / Buried Via Capability	Yes	Yes	Yes
Via in Pad Capability	Yes	Yes	Yes
Any-Layer HDI	Yes	Yes	Yes

SPECIAL TECHNOLOGIES	Factory 1	Factory 2	Factory 3
Coin / Heat Sink	No	Yes	Yes
Al-backed		No	No
Cu-Backed	No	Yes	Yes
Metal Core	No	Yes	Yes
Heavy Copper	Yes	Yes	Yes
Capacitive Laminate	No	No	No
Embedded Resistor Foil	No	No	No
Embedded Components	No	Yes	No
Conductive Paste	No	Yes	Yes
Substrate / IC Packaging	No	No	No
SAP / mSAP Process	No	No	No
Ceramic Packaging	No	No	No

MATERIALS	Factory 1	Factory 2	Factory 3
CEM1 / CEM3	No	Yes	No
Pb Free RoHs - 180 Tg FR4	Yes	Yes	Yes
Pb Free / Halogen Free - Mid/High -Tg FR4	Yes	Yes	Yes
Mid Loss - FR408 HR, -13EP	Yes	Yes	Yes
Low Loss - 13EPLI, I-Speed	Yes	Yes	Yes
Very Low Loss -	Yes	Yes	Yes
Ultra Low Loss - Meg 6, I-Tera	Yes	Yes	Yes
Polyimide Laminates	Yes	Yes	Yes
RF / Microwave / High Frequency	Yes	Yes	Yes
BT	No	Yes	No
Thermally Conductive Laminate / Prepreg	Yes	Yes	No

SURFACE FINISHES	Factory 1	Factory 2	Factory 3
OSP	Yes	Yes	Yes
Electroless Nickel / Immersion Gold	Yes	Yes	Yes
ENEPIG	Yes	Yes	Yes
Hard Gold Body	No	Yes	Yes
Ni / Au Edge Fingers	Yes	Yes	Yes
Soft Gold	No	Yes	Yes
Immersion Silver	Yes	Yes	Yes
Immersion Tin	Yes	Yes	Yes
Lead Free HAL	Yes	Yes	Yes
Tin-Lead HAL	Yes	Yes	Yes
AS9100D	No	No	Yes
ISO 9001:2015	Yes	Yes	Yes
ISO 14001:2015	Yes	Yes	Yes
ISO 45001:2018	No	Yes	Yes
ISO 50001:2018	No	No	No
UL 94V-0	Yes	Yes	Yes
IATF 16949:2016 (Automotive)	Yes	Yes	Yes
ISO 13485 (Medical)	No	Yes	No
AS9100D	No	No	Yes
ISO 9001:2015	Yes	Yes	Yes
ISO 14001:2015	Yes	Yes	Yes
ISO 45001:2018	No	Yes	Yes

Eltek Ltd.

HQ - Sales & Manufacturing

📍 20 Ben Zion Gelis Street
Petach Tikvah, 4927920
Israel

☎ +972 3 939 5050

✉ main@nisteceltek.com

Eltek USA Inc.

Customer Service Sales
& Technical support

☎ (480) 716-5421

✉ info@eltek.us